

GENERAL NOTES

A BILATERAL GYNANDROMORPH OF *ERYNNIS HORATIUS* (HESPERIIDAE)

Eight larvae (2nd and last instars) and 2 pupae of Horace's dusky wing, *Erynnis horatius* Scudder and Burgess, were collected on 13 August 1980 in Baton Rouge, East Baton Rouge Parish, Louisiana. The larvae were found on cherrybark oak, *Quercus falcata* var. *pagodaefolia* Ell. and raised on this in captivity. On 10 September 1980 an adult bilateral gynandromorph emerged.

The right half of the specimen is female in appearance, and the left is male (Fig. 1). The right forewing measures 18.1 mm in length and exhibits characters of a typical phenotype 2 female, i.e., spots 2, 3, 6, 7, 8, 9 and Yd 5 are present (Burns, J. M., 1964, Evolution in skipper butterflies of the genus *Erynnis*, Berkeley, Univ. of Cal.). The left forewing measures 16.4 mm in length and has the male costal fold, spots Yd 5 and 3 are smaller in the left forewing (δ) than in the right forewing (φ), and spot 2 is not present on the left forewing (δ). The median dark brown mottling on the right (φ) forewing is stronger than on the left (δ) forewing and the right hindwing (φ) is also lighter than the left (δ) hindwing. All spots on both forewings are semihyaline. The antennae appear dissimilar and the right (φ) labial palp measures 1.5 mm and left (δ) 1.2 mm.

The external genitalia were dissected and consisted of male structures including an aedeagus. A bursa copulatrix was also present. The valvae of a typical individual (com-



FIG. 1. Bilateral gynandromorph of *Erynnis horatius* Scudder and Burgess.

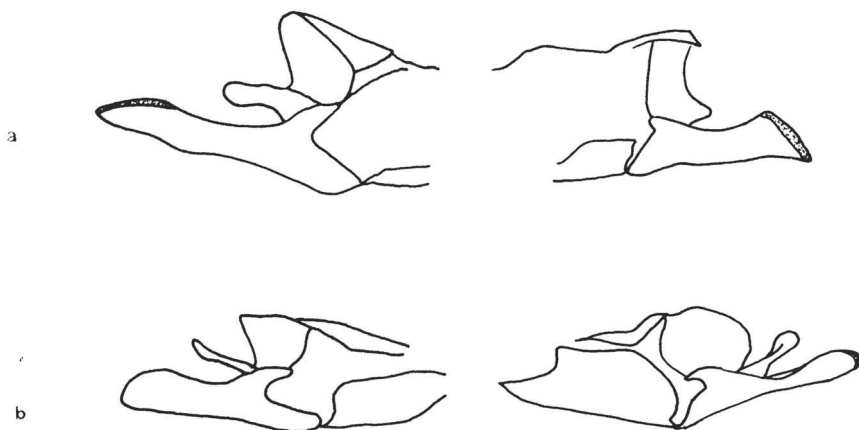


FIG. 2. Left and right valvae of *Erynnis horatius* a) typical individual, b) corresponding gynandromorph.

pared with illustrations from Forbes, W. T. M., 1960, *Lepidoptera of New York and neighboring states, Part IV, Cornell Univ. Agri. Exp. St. Memoir 371*) and the corresponding pair of gynandromorph valvae are shown in Fig. 2. The length of the right and left valvae of the typical individual (collected 23 August 1976, Baton Rouge, LA) measures 1.15 mm and 1.30 mm respectively, while the gynandromorph valvae measure 0.95 mm and 1.05 mm. The gynandromorph has ampullae on both valvae, while the typical individual displays the usual asymmetrical dimorphism. The number of marginal spines on the valvae of the typical specimen is 11 (right) and 11 (left) in contrast to that of the gynandromorph which is 13 (right) and 9 (left).

The specimen and pupal case have been deposited in the Louisiana State University, Department of Entomology Collection (LSUC). We thank Drs. H. B. Boudreaux and J. B. Chapin for reviewing the manuscript.

MICHAEL L. ISRAEL & JAMES E. CILEK, *Department of Entomology, Louisiana Agricultural Experiment Station, Louisiana State University, Baton Rouge, Louisiana 70803.*