

JOURNAL OF THE LEPIDOPTERISTS' SOCIETY

Volume 32

1978

Number 1

Journal of the Lepidopterists' Society
32(1), 1978, 1-2

TYPES OF *PARNASSIUS CLODIUS GALLATINUS* (PAPILIONIDAE)

STEVE KOHLER

Montana Department of Natural Resources and Conservation, Division of Forestry,
2705 Spurgin Road, Missoula, Montana 59801

ABSTRACT. Types of *Parnassius clodius gallatinus* Stichel, 1907, were discovered in the remnants of the Elrod collection, at the University of Montana, Missoula. Proper labels have been attached to the specimens, and they have been placed in the collection of the American Museum of Natural History.

The description of *Parnassius clodius gallatinus* Stichel was based on a pair illustrated by Elrod (1906). The actual specimens were never seen by Stichel (1907).

While preparing a paper clarifying the nomenclature of *Parnassius clodius* Ménériés subspecies found in the Rocky Mountains (Ferris, 1976), Cliff Ferris contacted me in an attempt to locate the types of *gallatinus*. A search through the remnants of the Elrod Collection, housed at the University of Montana, Missoula, led to the discovery of the two specimens matching Elrod's 1906 illustrations. They were figured on page 16 of "The Butterflies of Montana."

At the suggestion of Ferris, the two specimens have been placed in the collection of the American Museum of Natural History. The following labels are affixed to the specimen pins:

Holotype Male: A white label partially machine printed in black ink and partially hand lettered in red ink which reads: Gallatin Co. Mont./ Elev. 6800/ Col. E. Koch/ 6-27 1900, and a red label hand lettered in black ink which reads: Holotype ♂/ *Parnassius clodius/ gallatinus* Stichel/ ex. Elrod Coll. Univ./ Mont. S. Kohler 1976.

Allotype Female: A white label partially machine printed in black ink and partially hand lettered in red ink which reads: Gallatin Co. Mont./ Elev. 6800/ Col. Cooley/ 6-27 1900, and a red label hand lettered in

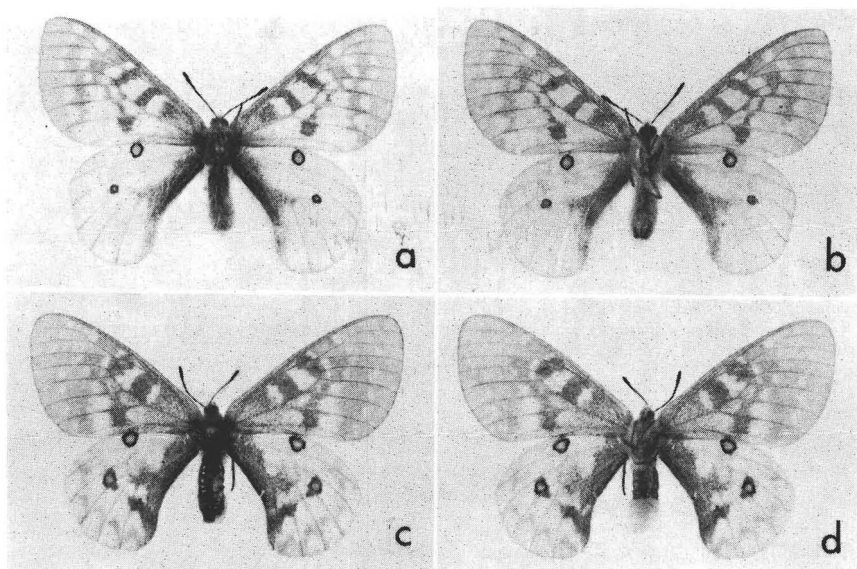


Fig. 1. *Parnassius clodius gallatinus* Stichel: a) holotype male, dorsal; b) same, ventral; c) allotype female, dorsal; d) same, ventral. Photos approximately $\frac{2}{3}$ natural size.

black ink which reads: Allotype ♀ / *Parnassius clodius/ gallatinus* Stichel / ex. Elrod Coll. Univ. / Mont. S. Kohler 1976.

The specimens are in good condition except for some minor dermestid damage to the abdomen of the female. An additional pair collected by Cooley at the same locality and on the same date was located in the collection of Montana State University, Bozeman, for Ferris by Dr. Norman L. Anderson. These are not designated as paratypes.

Because of the scarcity of copies of Elrod's "The Butterflies of Montana," the type specimens have been illustrated in Figure 1.

ACKNOWLEDGMENTS

I would like to thank Dr. James H. Lowe and the University of Montana for allowing the type specimens to be placed at the American Museum of Natural History, and also Cliff Ferris for comments and assistance.

LITERATURE CITED

- ELROD, M. J. 1906. The butterflies of Montana. Univ. Montana Bull. 10: 1-174.
 FERRIS, C. D. 1976. A note on the subspecies of *Parnassius clodius* Ménétriés found in the Rocky Mountains of the United States (Papilionidae). J. Res. Lep. 15: 65-74.
 STICHEL, H. 1907. Lepidoptera Rhopalocera Fam. Papilionidae Subfam. Parnassiinae. Wytzman Gen. Ins. Fasc. 58: 1-60.