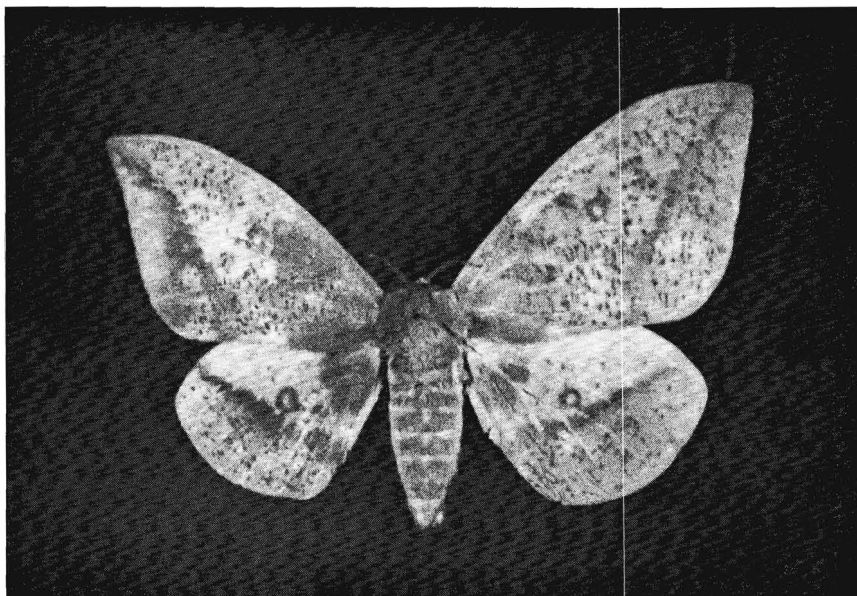


GYNANDROMORPHIC *EACLES IMPERIALIS*

This gynandromorphic specimen of *Eacles imperialis* Drury, shown in Fig. 1, was attracted to black light July 20, 1963, in Pottersville, New Jersey. It hovered over a dark driveway about 50 feet away from black light when it was picked up by my partner, Don Ohlke. It is now in the author's collection. It is a perfect specimen and may be briefly characterized as follows:



Left side, male wing much smaller than female wing, both wings of average size of natural specimens, respectively. Markings on both sides normal above. Antenna on male side normal, on female side, female dorsally, male ventrally with lashes shorter than on male side. Thorax with more yellow between and behind tegulae than average male and female. Abdomen female side a little wider than male side, tapering to normal male anal end. On underside postmedial line completely missing on both fore- and hindwing of female side, a weak postmedial line on male side, missing on other male specimens. All six legs of a much deeper rose color than found on natural specimens.

JOSEPH MULLER, R.D. No. 1, Lebanon, New Jersey