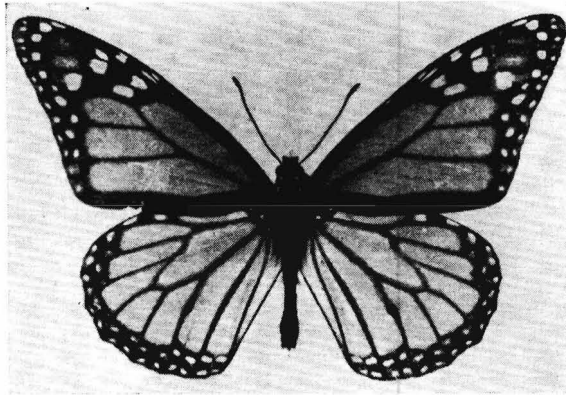


FIRST *DANAUS PLEXIPPUS* CAUGHT IN JAPAN

One ♂ *Danaus plexippus plexippus* L. was caught by NORIO HOSHIZAKI, then a senior high school student, on a mountain ridge at the north-west corner of Tokyo-Prefecture (alt. ca. 1,670 m.), on 19 August 1950.



The butterfly is in fairly good condition with the scales a little rubbed off evenly, as shown on the accompanying photograph. This is the first and only reliable record of the North American Monarch captured in Japan. The specimen is in HOSHIZAKI'S collection. (Wing-expanse: 88mm.)

TARÔ IWASE, 345 Komachi Kamakura, Kanagawa-Ken, JAPAN

THE FOODPLANT OF *LEGNA PERDITALIS*

What is known about the immature stages of *Legna perditalis* Wlk.? *Cephalanthus* as a food plant for the genus, as given in one reference, appears doubtful for *L. perditalis* in the light of data collected for this species on Long Island, New York.

In March, 1949, two small pupæ were found in the base of the culms of the Woolgrass, *Scirpus cyperinus* (L.) Kunth in a swamp at Greenport. On June 23 a male *Legna perditalis* emerged from each pupa, the same date that the first of this species appeared at light that year.

In August, 1949, a study was made of the clumps of Woolgrass in the swamp, and larvæ were found feeding in the stems. These larvæ pupated in the tunnels in September. The following June *Legna perditalis* imagoes again emerged from these pupæ, which gave clear proof that this species is a borer in sedges and winters in the pupal stage on Long Island.

The work of *Legna* in the Woolgrass resembles that of *Oligia diversicolor* Morr. which feeds in the same sedge but matures and emerges in late summer and early fall of the same year and never winters over in the pupal stage on Long Island.

Generally speaking, except in certain boggy areas where both *Cephalanthus* and Woolgrass are abundant, *L. perditalis* is not a common species on Long Island.

→ ROY LATHAM, Orient, N.Y., U.S.A.

double
printing
(on most or all copies)